

## TRANSFERRING VIA BLUETOOTH

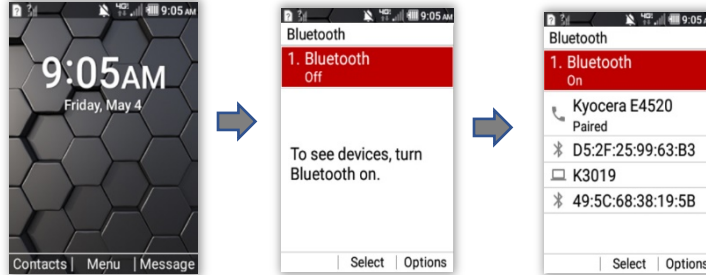


(PREFERRED METHOD)

1. Pair the phones via Bluetooth
2. Send all contacts to the new phone
3. Import the vCard file

### PAIRING THE PHONES VIA BLUETOOTH

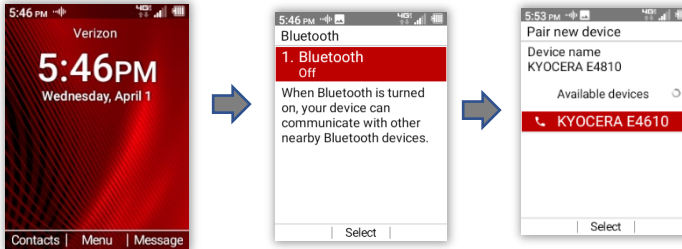
Basic Phone: DuraXV LTE



- Select Menu
- Select Tools & Settings
- Select Settings
- Select Wireless & Networks
- Select Bluetooth Menu

- Select Bluetooth
- Select On

Basic Phone: DuraXV EXTREME



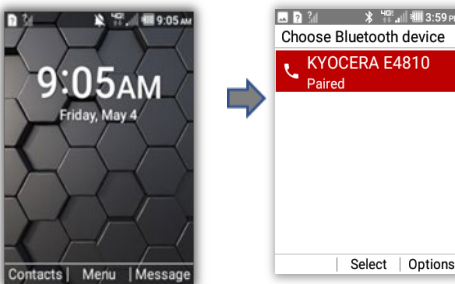
- Select Menu
- Select Tools & Settings
- Select Settings
- Select Wireless & Networks
- Select Bluetooth Menu

- Select Bluetooth
- Select On

- Pair with DuraXV Extreme

### SENDING ALL CONTACTS VIA BLUETOOTH

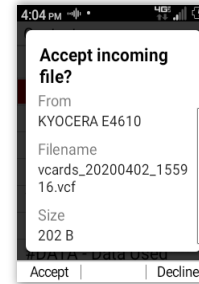
Basic Phone: DuraXV LTE



- Select Contacts
- Select Options
- Select Share
- Select Bluetooth

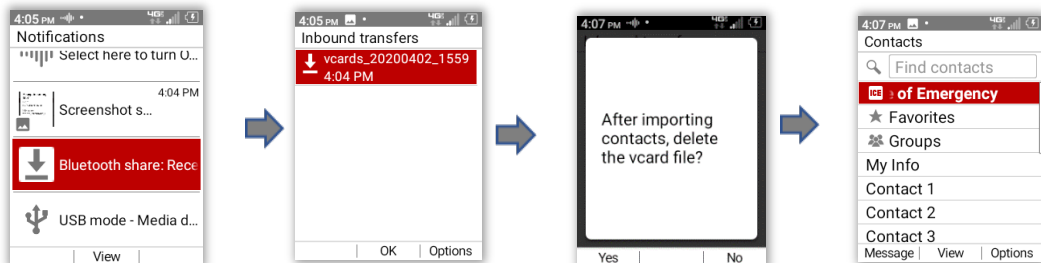
- Choose Bluetooth Device
- Device Sends Contacts

Basic Phone: DuraXV EXTREME



- Accept incoming file

Basic Phone: DuraXV EXTREME



- Notifications
- Select Bluetooth share...

- Inbound transfers
- Select vcards...

- Select Yes to ensure you don't get double contacts

- Contacts
- Your contacts are shown